

2022



CO2 Cartridge is not included
12g
MADE IN TAIWAN

AAKCCD47系列說明書 AAKCCD47 INSTRUCTION MANUAL

KWC KWIEN WELL TOY INDUSTRIAL CO., LTD
SINCE 1972 www.kwcgun.com

台南市仁德區義林路168巷89號
NO.89, LN. 168, YILIN RD.,
RENDE DIST., TAINAN CITY
71752, TAIWAN (R.O.C.)
TEL : +886-6-2798175
FAX : +886-6-2798176
sales@kwcgun.com
www.kwcgun.com



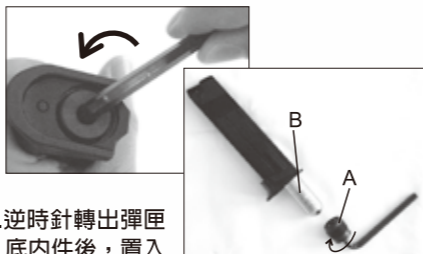
操作/OPERATION

射擊前的準備 BEFORE SHOOTING



1. 按下卡榫
Press the button
2. 取出彈匣
Release the magazine

3. 使用六角扳手反時針方向取出彈匣底內件。
Use hexagonal wrench to remove the magazine cap by counter clockwise.



4. 逆時針轉出彈匣底內件後，置入小鋼瓶B，再以順時針方向鎖緊彈匣底內件A。當刺破鋼瓶出氣時，請快速鎖緊。
Turn the magazine cap out counter-clockwise and place CO2 cartridge B inside the magazine. Rapidly turn the screw A clockwise when piercing the cartridge in the magazine.

5. 拉下滑粒。
Pull the magazine follower down.
6. 填裝B.B彈。
Loading BBs
為了使擊發順暢，填裝方法是讓B.B彈在彈匣中一粒接著一粒。
For smooth shooting, Load BBs one by one.



7. 最多可裝14粒。
Maximum BB capacity is 14 rounds.

射擊 SHOOTING

1. 將裝好B.B彈的彈匣插入槍身上推入，直到彈匣卡榫發出“卡嗒”為止。
Insert fully loaded magazine in the airsoft until you hear the sound of “CLICK”.



2. 瞄準目標物扣引扳機，則可擊發。
Aim the target and pull the trigger.



- ▲注意：在長期不使用的狀態下，請將彈匣內的氣體洩放掉。
- ▲CAUTION：Release all of the gas in the magazine when it is unused in long-term period.

安全裝置 SAFETY

可射擊
SAFETY OFF



保險
SAFETY ON



故障的原因與排除 BREAK DOWN FAQ

1. 不良的B.B彈是造成卡彈的原因，請使用品質優良的KWC B.B彈。
Bad quality BB is the main reason to cause BB jam. Please use the best quality KWC BB to avoid jamming problem.
2. 當卡彈時，請盡可能先取出彈匣，再以不傷槍管的軟質細棒(不可大於6mm直徑)從槍口置入清除。
When BB jammed, first please release the magazine from pistol then use a soft stick (diameter no bigger than 6mm) to clear up the barrel.
3. 空擊發易造成零件損耗，請避免此動作。
Please avoid dry firing, for it could cause parts deformed or damage.

⚠ WARNING

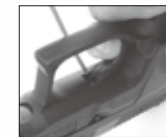
此低動能遊戲用槍是針對喜愛射擊運動的消費者所開發。避免因使用方法不正確或改造所發生的故障或事故，請務必詳讀說明書，正確的操作享受愉快的射擊運動。

1. 除了發射時外，不要將手指頭掛在板機上。
2. 選擇安全與適當標靶
3. 在非使用期間，請保持保險關閉且退彈的狀態，就算在非使用狀態，也要如同其已裝彈。
4. 如任何的機械產品，槍的保險也可能失效。即使在保險關閉的狀態下也請小心的操作此槍，請勿將槍口對人。
5. 千萬不要對堅硬或平坦表面、水面射擊，以避免跳彈。
6. 請妥善保管產品在未成年孩童無法伸手取得的場所。
7. 每次使用前後都應該檢查擋彈物，假如擋彈物表面有磨損失效或是反彈時請停止使用。
8. 請使用高品質BB彈，請勿使用①口徑大於6mm②表面不平滑的③重複使用過的BB彈④非本說明書指名的發射物。
9. 最高的使用及儲藏CO2小鋼瓶環境為50°C(122°F)以內，高溫可能會造成CO2小鋼瓶過熱甚至爆炸。
10. 檢查任何掉落之槍枝，以確保未影響其功能。

故障/BREAK DOWN

4. 當扣引扳機時，此時B.B彈即同時在上膛階段，不可扣引一半時又回復，因為如此的動作，將有可能上膛兩發B.B彈。
Pulling trigger will load BB in the barrel. Therefore, please do not pull the trigger half way and release the trigger. This action could load 2 BBs in the pistol and cause jamming.

5. 使用一段時間後，請再次用中性矽油脂潤滑撞針及扳機軸心。
Please spray the lubricant into firing pin and trigger pin.



請務必嚴格遵守 使用說明指導書
For your safety, please read this manual carefully before use.

This airsoft is intended for recreational or training purposes. To prevent improper handling, modification or alteration causing malfunction or accident, please read the owner's manual carefully. Enjoy the pleasant shooting experience by proper operation.

1. Do not put your finger on the trigger except shooting.
2. Please choose safe and proper target.
3. Please always keep the airsoft on safe and unloaded when not using.
4. Like all mechanical devices, an airsoft safety can fail. Always handle the airsoft safely even when the safety is “on safe”. Never point the airsoft at any people.
5. Avoid ricochet. Never shoot at a hard or flat surface or at water.
6. Keep the airsoft out of reach for small children.
7. Your backstop should be inspected for wear before and after each use. Discontinue use of the backstop if surface shows signs of failure or ricochet.
8. Only use high quality BB. Never use ①BB diameter larger than 6mm②BB with unsmoothed surface③reused BB that has been fired④incorrect projectiles not design for this airsoft.
9. Do not expose CO2 cartridges to heat or store them at temperatures above 50°C(122°F). CO2 cartridges may over heat or explode at temperatures above 50°C(122°F).
10. Check any gun that has been dropped to ensure that its function has not been affected.

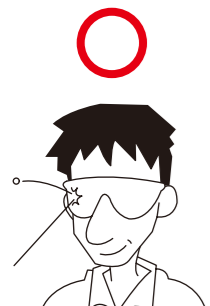
WARNING 警告

AAKCCD47 系列零件表 AAKCCD47 SERIES PARTS LIST

AAKCCD47 系列零件表 AAKCCD47 SERIES PARTS LIST

★使用玩具槍前，請務必戴上保護眼鏡或面罩。

★Always wear eye protection when using airsoft.



★使用玩具槍前，請務必詳讀說明書內容。

★Read the owner's manual before using the airsoft.



★不可攜帶玩具槍在公共場所行走，請務必裝在袋子或盒子內。

★Always transport an airsoft in a locked carrying case. Make sure it is unloaded and on safe.

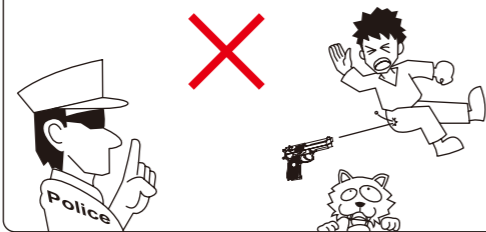


★請不要由槍口向內探視。



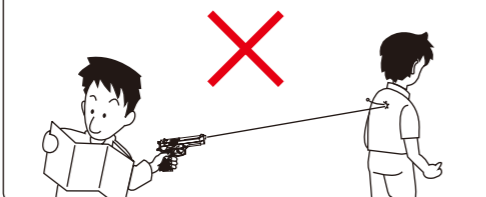
★請不要在公開場合使用玩具槍，也請不要拿玩具槍對準人或動物。

★Never brandish or aiming this airsoft at any people or domestic animals. Brandish this airsoft in public is dangerous and may be a crime.



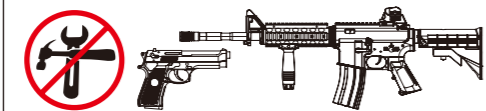
★請確認後再發射BB彈方向，附近無人或動物存在。

★Always be aware of your surrounding before and during shooting and select a safe area for target practice.



★不可任意改造或加工玩具槍，私自改造加工會造成產品損壞、保固失效，導致使用上不安全，甚至觸法送辦。

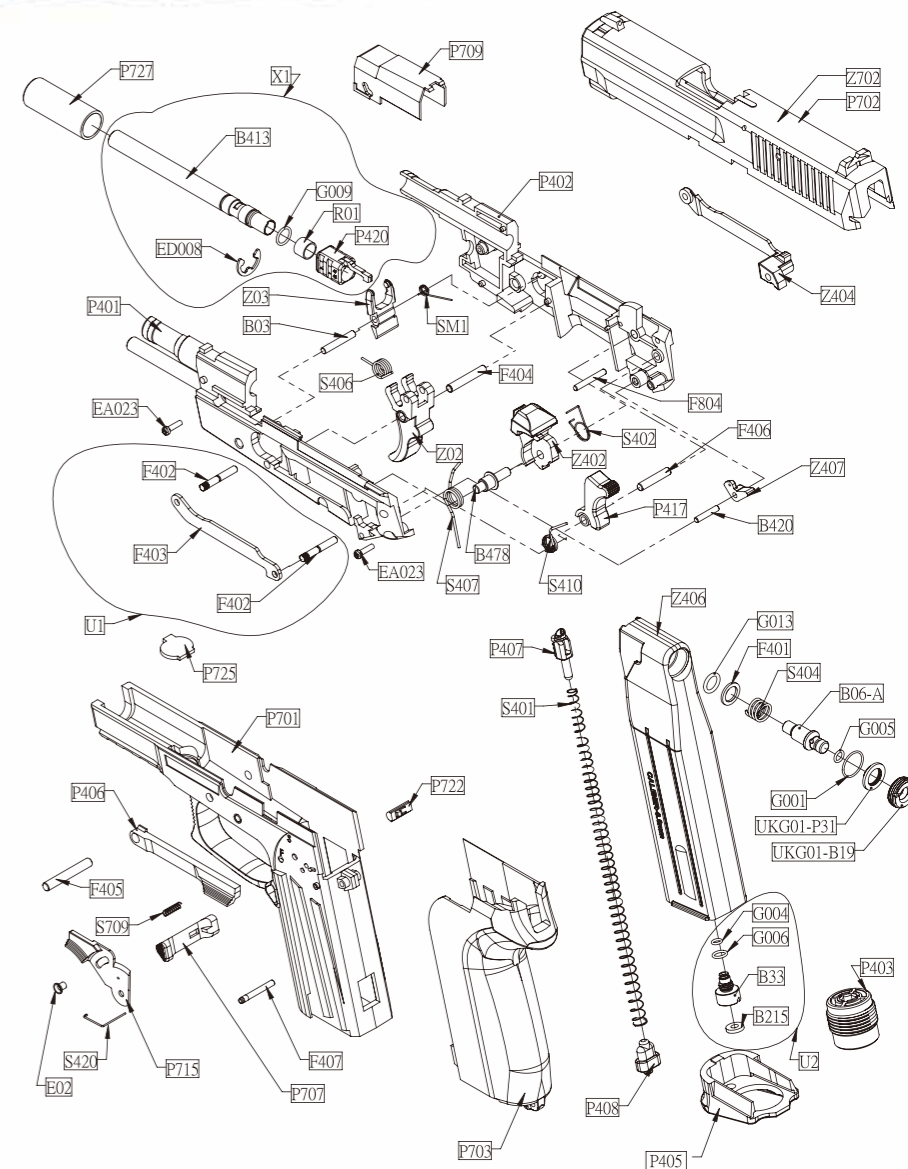
★Disassemble, modify, or alter of your airsoft may cause malfunction, void your warranty and may make it unsafe to use.



Do not display this pistol in public—it may confuse people and may be a crime. 請不要忘了，雖然自己知道這只是玩具，但不知道的人，會以為這是真槍。

圖號	零件名稱	UNIT
UKG01-P31	心棒蓋迫緊	VALVE PACKING
P401	擊鐵箱(左)	CHASSIS (L)
P402	擊鐵箱(右)	CHASSIS (R)
P403	彈匣底內件	MAGAZINE BOTTOM CAP
P405	彈匣底座	MAGAZINE BASE
P406	上蓋止動片	SLIDE STOPPER
P407	彈匣滑粒	MAGAZINE FOLLOWER
P408	彈匣底座定位件	MAGAZINE BASE JOINT
P420	槍管連動件	BARREL TOW
P701	槍身本体	FRAME
P702	槍身上蓋(塑膠)	SLIDE (PLASTIC)
P703	槍柄	GRIP
P707	彈匣卡榫	MAGAZINE CATCH
P709	導管配件	OUTER BARREL COVER
P417	擊鐵	HAMMER
P715	保險(左)	SAFETY (L)
P722	彈匣卡榫配件	MAGAZINE CATCH ACCESSORY
P725	銘板	SYMBOL PLATE
P727	槍管套(短)	OUTER BARREL SLEEVE
Z02	扳機	TRIGGER
Z03	扳機連動件	TRIGGER TOW
Z402	撞針	FIRING PIN
Z404	扳機連桿右	TRIGGER BAR (R)
Z407	保險強制型配件	TRIGGER BAR BLOCK
Z702	槍身上蓋(金屬)	SLIDE (METAL)
R01	子彈迫緊HOP-UP	RUBBER CHAMBER
B03	扳機連動件軸	TRIGGER TOW PIN
B06-A	心棒	VALVE
B33	氣瓶頂針	PUNCTURE VAVLE
B215	氣瓶頂針迫緊	PUNCTURE VAVLE PACKING
B413	槍管	BARREL
B420	保險強制型配件軸	TRIGGER BAR BLOCK PIN
B478	KC47 撞針軸	FIRING PIN

圖號	零件名稱	UNIT
UKG01-B19	心棒蓋	VALVE CAP
F401	心棒壓簧墊圈	VALVE SPRING GASKET
F402	扳機連桿軸	TRIGGER BAR AXLE
F403	扳機連桿左	TRIGGER BAR (L)
F404	軸(扳機用)	PIN (TRIGGER)
F405	軸A(本体用)	PIN A (FRAME)
F406	擊鐵軸	FIRING PIN AXLE
F407	KA-01軸(擊鐵箱)	KA-01 AXLE (CHASSIS)
F804	扳機連桿軸	TRIGGER BAR AXLE
S401	彈匣壓簧	MAGAZINE SPRING
S402	撞針緩衝扭簧	FIRING PIN BUFFER SPRING
S404	心棒壓簧	VALVE SPRING
S406	扳機扭簧	TRIGGER SPRING
S407	撞針扭簧	FIRING PIN SPRING
S410	擊鐵扭簧	HAMMER SPRING
S420	保險扭簧	SAFETY SPRING
S709	彈匣卡榫壓簧	MAGAZINE CATCH SPRING
SM1	扳機連動件扭簧	TRIGGER TOW SPRING
E02	企眼	EYE COUPLING
EA023	⊕ 2.3X8束黑	SCREW 2.3X8
ED008	E型扣環	E-RING
G001	O型環 0.8X11.3id	O-RING 0.8X11.3id
G004	O形環 1X3	O-RING 1X3
G005	O型環 1X4	O-RING 1X4
G006	O形環 1X5	O-RING 1X5
G009	O型環 1X7	O-RING 1X7
G013	O形環 1.45X6.9id	O-RING 1.45X6.9id
X1	內槍管組件	INNER BARREL UNIT
U1	扳機連桿組件	TRIGGER BAR UNIT
U2	氣瓶頂針組件	INNER VALVE UNIT



※零件有時為了改良而不經預告變更。

Spare parts may be modified for quality improvement And such modification may be without advance notice.